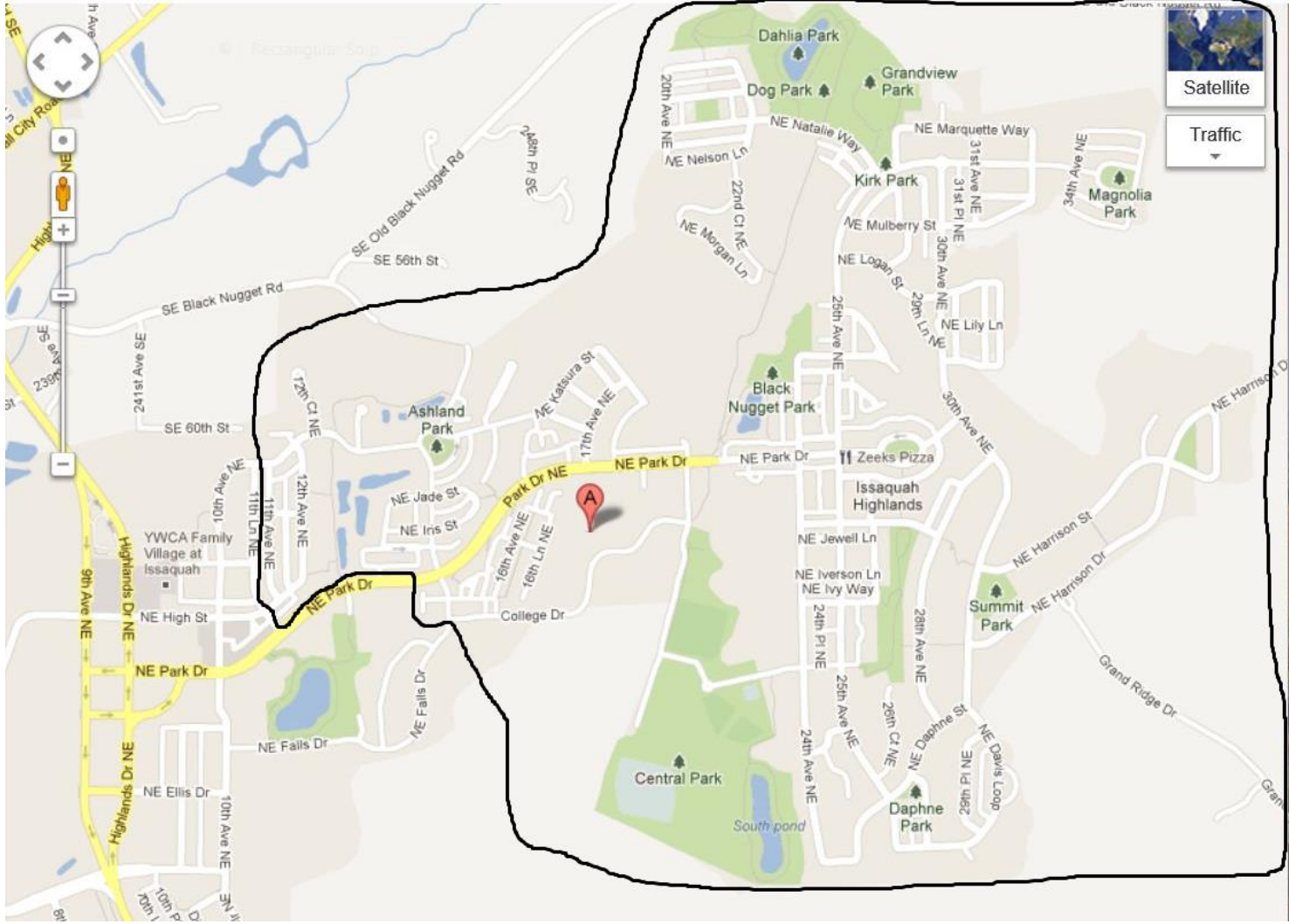


Grand Ridge Boundary Map



Full Day Kindergarten in Issaquah

Parent Orientation

2018-2019 School Year

Welcome

- Welcome to Grand Ridge : Christy Otley, Principal
- Registration Materials: Annette Aratani, Registrar
- Immunizations\Health Forms: Heather Bissmeyer, Nurse
- PTSA: Jo Mockford & Alicia Spinner
- ISF: Katie Short

State-funded Full Day Kindergarten

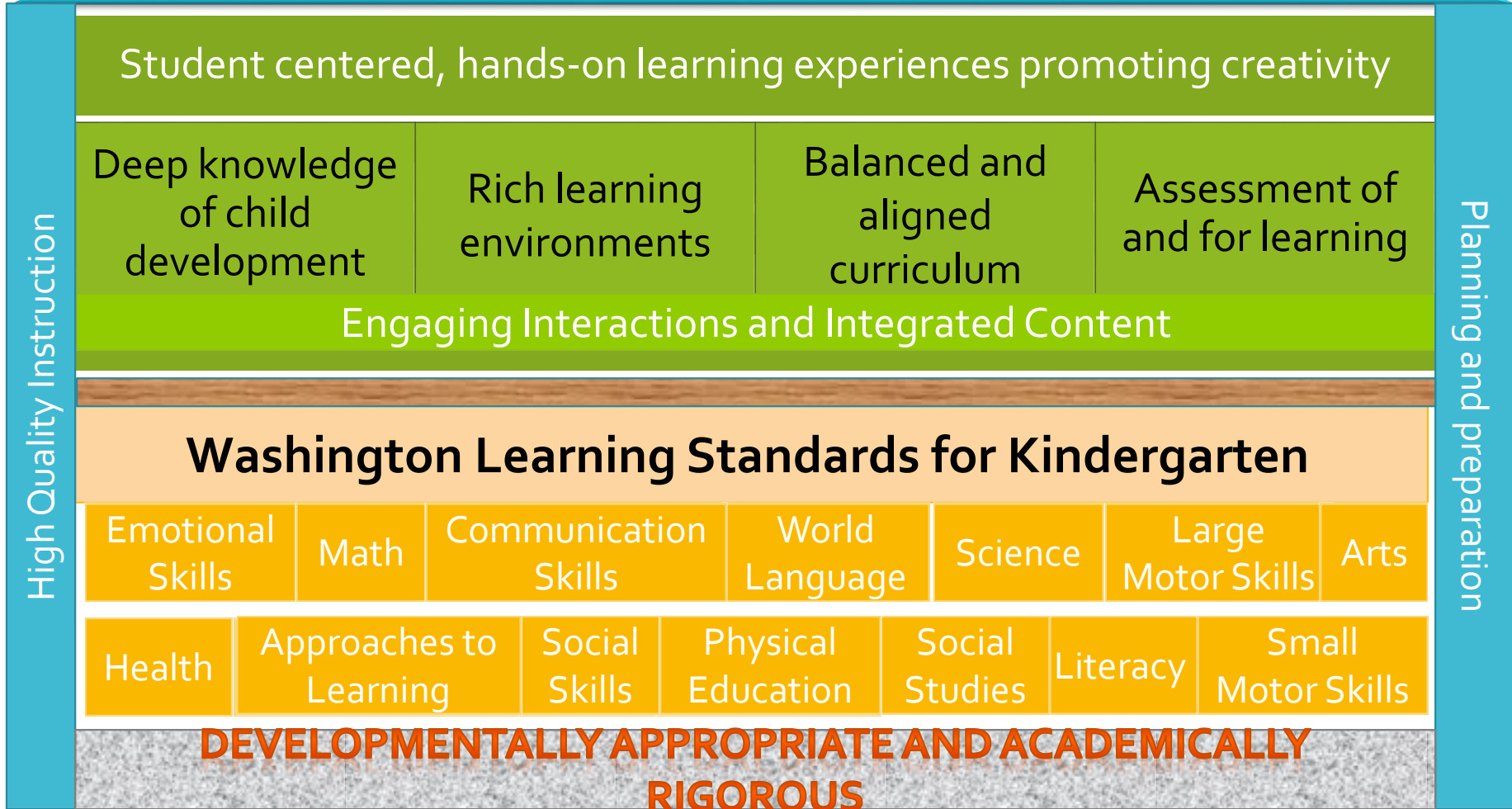
- No cost to families
- Provides maximum learning opportunity for students
- Offers full access to specialists (PE, Music, Library)
- Developmentally appropriate and student centered
- Integrated content with rich, hands-on experiences
- Based on rigorous standards

State-funded Full Day Kindergarten

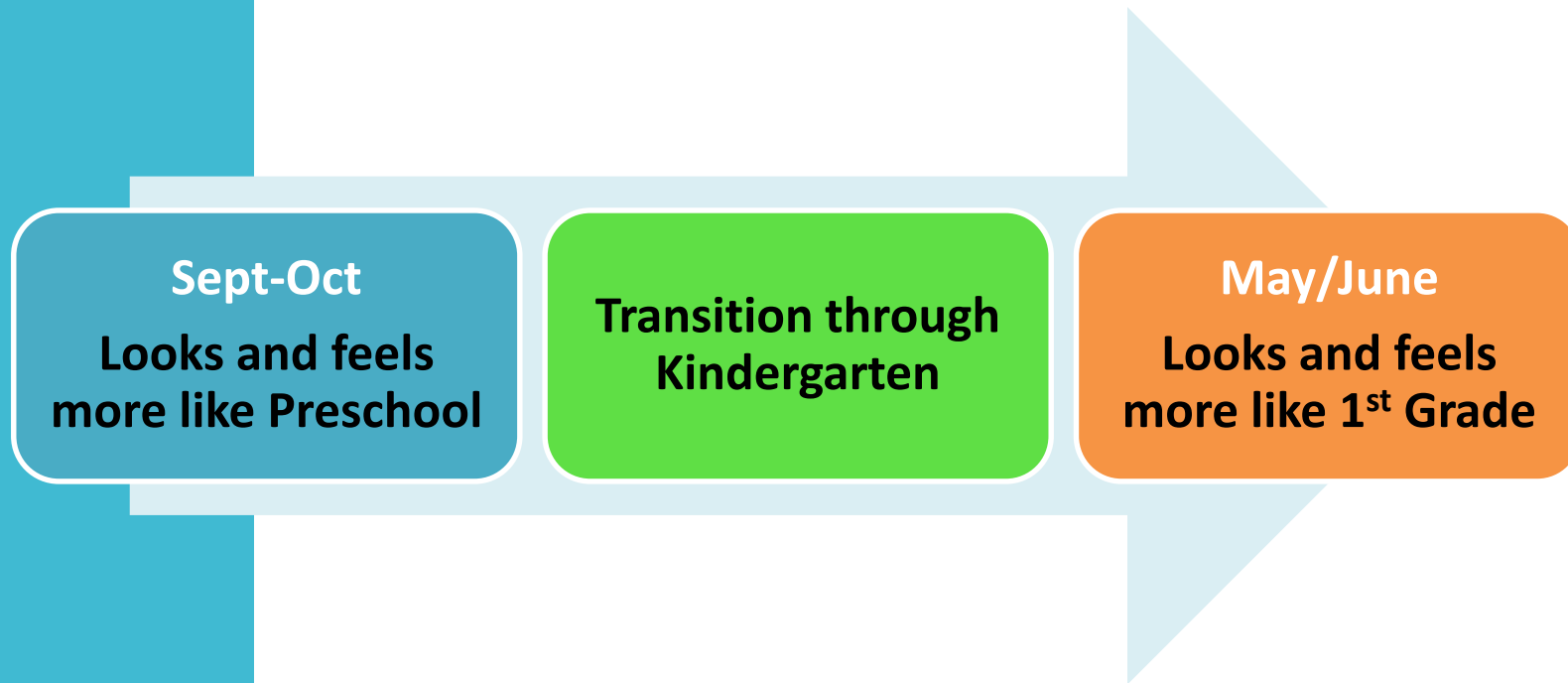
- State requires full day kindergarten be available to all students
- Parents may opt for half-day
 - Student will be placed in full-day classroom in the morning for 3 hours
 - Transportation is provided in the morning, parents must transport at the end of the half-day

Full-Day Kindergarten

Every student, every classroom, every day



Kindergarten is a transition year



What can we expect at the beginning of the year?

Washington Kindergarten Inventory of Developing Skills (WAKIDS)

- A required component of State-funded Full Day Kindergarten
- A transition process that helps to ensure a successful start to kindergarten and beyond

What can we expect at the beginning of the year?

- Family Connection Meeting
 - First 3 days of school, classroom teacher meets with each kindergarten family
 - 4th day of school is first day of school for kindergarteners
- Whole-Child Assessment: September/October
 - Kindergarten teacher observes children during everyday classroom activities
 - Helps teachers find out what each child knows and can do at the beginning of the year
 - Inventory taken of each child's developing skills in six areas
 - Social-emotional
 - Physical
 - Cognitive
 - Language
 - Literacy
 - Mathematics

Kindergarten Assessments

March 14

In order to assist us in making appropriate classroom placement decisions and determine eligibility for the ISF Funded Pre-Kindergarten/Kindergarten Summer Program, we will be assessing all incoming kindergarten students. You will have an opportunity to schedule a time when you return your completed registration packet.

Challenger or Endeavour

- After registration, our transportation department will plot all addresses on a map.
- A line will then be drawn to determine the Challenger, Endeavour boundaries.
- This process will be complete by May, 2018.
- You will be notified by email.
- We are not able to take any special requests.

Registration Packets

Your child must be 5 by August 31, 2018.

For those families living in the Grand Ridge attendance area.

Turn in completed Registration Intake Form.

One packet per child.

Return packet on February 27 or March 2, 9:15am-3:00pm

Information Required to Register

Proof of Birth Date: A copy of birth certificate or passport must be provided

Proof of Residency: A copy of the first page of your lease or purchase agreement, showing your name and address *and* a copy of a utility bill less than 30 days old. (Utility bill must be power, gas, or cable – not cell phone).

Photo ID: The person registering the child must be the legal parent/guardian listed on the registration form.

Immunizations: A complete record of shots must be provided.

Registration packets will not be accepted without these documents.

If you are able to provide copies of all documents for your child's registration file, this will help the process go more quickly.

Health Conditions Questionnaire

- If your child has any health condition that could be considered life-threatening such as asthma, food allergies, seizures, diabetes.....
- According to the law, your child must have an emergency health plan, which includes medication orders from your child's health care provider in place before he/she can attend school.
- Forms will be sent to families after review of the Confidential Emergency Health Information by Nurse.

Minimum Vaccines Required for Kindergarten Attendance

- All boosters required for kindergarten can be given on or after the 4th birthday.
- Records are reviewed on an individual basis as needed.
- Physician verification of a history of varicella disease, or blood test (titer) showing immunity to varicella is acceptable (Chickenpox)
- If exemption from immunizations is desired, a meeting with the nurse is required.
- **ALL STUDENTS MUST BE COMPLIANT TO START KINDERGARTEN.**

PTSA & ISF

- Alicia Spinner – PTSA President
- Katie Short – ISF Representative

Before and After School Care



BEFORE AND AFTER SCHOOL CARE School Age Care

The Before and After School Care (BASC) Program provides a positive environment where your child can grow socially, intellectually and emotionally under the guidance of our well-trained team. Working collaboratively with the schoolteachers and staff, each child experiences an easy transition from their school day to our on-campus facility.

Because we are an Issaquah School District program we have the ability to utilize the gym, computer lab, and multi-purpose room at each school. We provide homework time, morning and afternoon snacks, family nights, enrichment activities, school break care, and summer day camps.

In addition to our regularly scheduled activities and fully stocked club room; we offer many opportunities for children to experience and explore their interests throughout the week. These include but are not limited to; cooking, science, cooperative games, community service learning, fitness and fine art.

www.beforeandafterschoolcare.weebly.com

DAYS OF OPERATION

Monday – Friday
during normal school operations,
see the B.A.S.C. calendar on
our website for dates of closures

School break and Summer Camp
services are available through a
separate registration process along
with an additional fee.

PROGRAM HOURS

6:30 AM – AM School Bell
PM School Dismissal – 6:30 PM
*There is no care provided during the
school day for half day K students.*

LOCATIONS

All 15 Issaquah School District
elementary schools

Middle School programs are available
at Beaver Lake, Issaquah, Maywood,
Pacific Cascade and Pine Lake.

Preschool is available at
Skyline High School.

REGISTRATION

Contact Colleen Carroll for more
information about registration.

Phone: 425-837-5080 or
E-mail:
carrollc@issaquah.wednet.edu

